



MV A'Mani Charter

FACT SHEET

THE ULTIMATE FISHING EXPERIENCE...

www.alphonsefishingco.com



AMIRANTES ARCHIPELAGO

For the Trip of a Lifetime...

The Amirantes archipelago lies south-west of the extensive, shallow-water Seychelles Bank in the western Indian Ocean and comprises of a group of carbonate island and islets extending over a distance of approximately 152km, from 4°52'S, African Banks, to 6°14'S, Desnoeufs Atoll. Most of the islands are sea-level coral reef platforms with varying degrees of subaerial sand cay and coral island development.

The Amirantes Bank is an elongate structure, measuring approximately 180km by 35km, deepest in its central zone with a marginal rim at water depths of 11 – 27m.

95km further south are the atolls of Alphonse, Bijoutier and St Francois. Desroches Island lies 16km east of the Amirantes Bank.

The MV A'mani liveaboard trips are unique in the fact that anglers have the opportunity to fish up to six areas during the charter.

Poivre, Sand Cay, African Banks and Remire Atolls are blessed with its wide array of thriving and unexploited marine life making them one of the "must do" fishing destinations.

It's a diverse place offering great offshore fishing for various pelagic and resident species as well as spectacular on shore flats fly fishing for bonefish and permit. However, beyond the diverse offering of fishing adventures to choose from, what makes the Amirantes one of the most desirable fishing destinations is its remote nature; the islands are largely undeveloped, allowing anglers to explore the untouched beauty these atolls have to offer.

For expert fisherman and beginners alike, the Amirantes has a huge variety of hard fighting adversaries, which can be caught with various techniques of your choice.

We practice a strict catch-and-release fishing policy, except for limited fish that are taken for the kitchen.

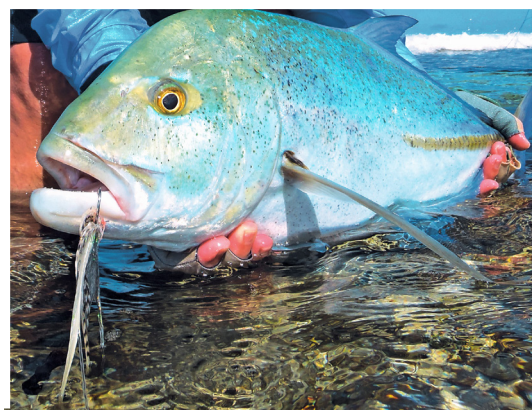
The various fishing charters and packages can be tailor made to suit your trip.

AT A GLANCE

- Located 665 nautical miles south-west of Mahé in the Seychelles.
- Up to six areas to fish, including Poivre, Sand Cay, African Banks and Remire Atolls.
- Some of the most remote and inhabited islands in the Seychelles.
- Diverse – great offshore fishing for various pelagic and resident species as well as spectacular on shore flats fly fishing for bonefish and permit.
- Accommodate up four to six fishermen per trip in single cabins or a combination of single cabins and bunks on MV A'Mani.
- Similar time zone to Europe, African and Middle East.



THE AMIRANTES BANK
SOUTHERN SEYCHELLES OUTER ISLANDS





THE AMIRANTES ARCHIPELAGO

Some of the most remote and secluded uninhabited islands in the Seychelles

GETTING THERE

- The MV A'Mani Charter departs from Alphonse Island, Seychelles.
- Mahé in the Seychelles is a four and a half hour flight from Dubai, Abu Dhabi, and Doha which all serve as a connecting hub for regular international flights from Europe, the United States, Africa and Asia.
- Direct flights to the Seychelles from Paris, Bombay, Nairobi, Mauritius, Antananarivo, Johannesburg, Addis Ababa, Reunion, Colombo, Dar-Es-Salaam and Frankfurt.
- Alphonse Island is an hour flight from Mahé, the main island of the Seychelles.
- Scheduled flights depart and return to Mahé each Saturday and selected Wednesdays.
- Scheduled Flights depart from the IDC Hangar, Pointe Larue, Mahé.
- Flight times are subject to change. Please make sure you confirm your correct flight times with our reservations team.
- Alphonse Island is also accessible through private charter flights.
- Guests are required to fly into Mahé at least 4 hours prior to departure.
- The Alphonse Island reservations team will assist with all return flight reservations between Mahé and Alphonse at the time of booking.

THE ISLANDS

AFRICAN BANKS

African Banks lies about 230km west of Mahé and the nearest island is Rémire lying 27km south. The group is a pseudo, has two small islands, which appear as just small sandstone ridges exposed only at low tide. The underwater bank extends over four kilometers north to south, three kilometers east to west and occupy a total area of about 10 square kilometers. The shallow coral ring is incomplete with the western edge varying between 19 to 36 meters deep.

RÉMIRE ISLAND (EAGLE ISLAND)

Situated 245km south of Mahé, Rémire is a tiny island only measuring 300 square meters. It is about halfway between African Banks, which is 25km north, and D'Arros Island 31.5km to the south. 2.5km west of Rémire lies the southern edge of Rémire Reef, which is detached and makes for a great fishing area.

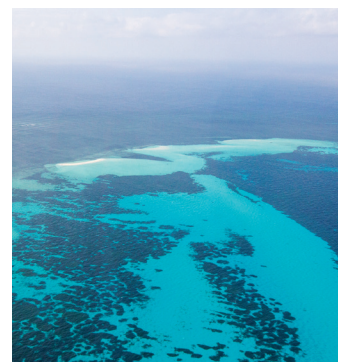
POIVRE ATOLL

Poivre lies 268km south of Mahé and is situated on the eastern edge of Amirante Bank. It's a small atoll, which is made up of two islands, Poivre and Ile du Sud, occupying the cardinal points of the compass. These islands are separated by a shallow lagoon which extends all the way back into Ile du Sud on a high tide. This area has the best of both worlds with mind blowing flats that will excite any fly fishing enthusiast, and arguably the best game fishing area that the Amirantes Atoll's have to offer. Situated on the eastern edge of the Amirante Trench which steadily steps down to 1200 meters only a few kilometers from shore, the area is synonymous for its great bluewater fishing. One of these renowned areas is the appropriately named "kennels" that is home to record breaking dog tooth tuna. Poivre is known as the best Indo Pacific permit fishery in the Seychelles.

ADDITIONAL ACTIVITIES

The **snorkelling** around the pirouetting coral heads and walls of the Amirantes is simply out of this world. There are snorkelling outfits on board for your use.

The **kayaking** along the edge of the islands on a high tide gives guests the opportunity to see the magnificent bounty of turtles, rays, fish, and various other sea creatures, which call the Amirantes their home. There will be two kayaks onboard which you are welcome to explore with.





THE FISHING GAME FISHING

The Amirantes has some of the greatest offshore angling that the Seychelles waters has to offer, and the beauty is that all the spots are easily accessible by A'mani. The offshore structure is ideal, with a mixture of rings of sunken coral atolls, sheer drop offs, ridges and ledges, all of which are teeming with game fish. Anglers enjoy exploring the edges of the famous "Ledge", the "Amirantes Trench", "Sand Cay Banks" as well as the other rims and coral reef platforms, while targeting the diversity of species both pelagic and reef that can be caught. Fish like sailfish, wahoo, dogtooth tuna, yellowfin tuna, dorado, giant trevally, bluefin trevally, jobfish, tropical amberjack and a large variety of snapper, wrasse and grouper can be caught on any given day.

BLUEWATER FLY FISHING

If you have never fought a sailfish, wahoo or yellowfin tuna, to name a few, on the fly, you are at the right place! The deep blue depths provide a prolific feeding ground for various fish species as the constant flow of rich currents well-up against the drop offs, ledges and ridges of the Amirantes. Anglers can start fishing for sailfish a mere 10 minutes away from Alphonse as the drop off is two miles from the A'mani's mooring. The pelagics are often lured to the boat by trawling a spread of teasers. Once they are within casting range, the hook-less teasers are removed and the angler casts a fly. The reef species can be targeted by dredging with a heavy sink tip fly line and a Mega Clouser. There is also the option of targeting both pelagic and reef species that congregate around the shoals of baitfish, such as fusiliers and scads.

FLY FISHING ONSHORE

Catching a permit on fly is an experience that every saltwater fly angler aspires to achieve. The broken coral and turtle grass flats surrounding Poivre, Remire and African Banks are the perfect habitat for these graceful feeders. Poivre is known as the atoll with the most prolific populations of indo-pacific permit in the Seychelles. On certain tides, there are also good numbers of bonefish in the four to eight pound range, which feed on the edge of the atoll. Poivre is purely a wading destination and anglers get to stalk these finicky feeders on foot as they hypnotize anglers with the waving of their sickle tails.

THE MOST UNIQUE & DIVERSE SALT WATER FISHING EXPERIENCE IN THE WORLD

REGULAR CATCHES : bonefish | moustache triggerfish | milkfish | giant trevally | barracuda | bluefin trevally | permit | jobfish
bohar snapper | yellowlipped emperor | sailfish | yellowfin tuna | dogtooth tuna | wahoo | yellowmargin triggerfish





MV A'MANI CHARTER

Equipped for the Ultimate Fishing Experiences



TACKLE & GEAR

Alphonse will have a range of flylines, flies and various other items for sales should you run out. Any tackle that is needed can be pre-ordered and will be available at Alphonse prior to your departure.

FLEET & GUIDES

BOATS

A'mani livaboard is a 54ft sportfisher motor catamaran with a fully rigged game fishing aft deck, which includes outriggers and a fighting chair.

To add to the experience Alphonse Fishing Co. has an array of sportfishing boats that can be chartered to accompany A'mani during the cruise. All these vessels are skippered by experienced and professional Alphonse Fishing Co. Captains.

OUR GUIDES

The Alphonse Island Fishing Co. guide team along with the Island Conservation Society ensure these fisheries are protected from over fishing. The Guides are conservationists at heart and some of them also hold qualifications in the field of ecology.

ALL ALPHONSE FISHING CO. GUIDES:

- Are professional, passionate and extremely experienced with all facets of fly fishing in these remote saltwater destinations.
- Are fluent in English [some speak French and Creole].
- Carry waterproof VHF radios and are in constant communication with each other as well as the base on Alphonse.
- Are qualified skippers, with STCW qualifications and have impeccable boat handling skills.
- Have first aid experience.
- Have pioneered many of the techniques in catching the various species that call Seychelles home eg: milkfish & triggerfish.

ADDITIONAL BOATS PRE-BOOKING REQUIRED

To add to the experience Alphonse Fishing Co. has an array of sportfishing boats that can be chartered to accompany A'mani during the cruise. All these vessels are skippered by our experienced and professional Alphonse Fishing Co. Captains. Should you require additional boats for your charter, please book this in advance with the reservations team.



ROD & REEL LOAN

Fly fishing outfits consisting of Thomas and Thomas fly rods and Shilton reels, loaded with 300 yards of Cortland braided backing can be loaned at no charge. Fly lines will need to be purchased from the shop and it is recommended that you pre-order a fly pack for your expedition, which would include all the flies you would need for the various different species on offer. There is a full range of flies that are custom tied for Alphonse destinations on the right hooks and with the correct material. It's important that angler's pre book the rod hire as well as tackle to insure that we have sufficient stock. All tackle sales may be settled at the end of your trip upon check out from Alphonse. All rod breakages are for your account and will be billed at US\$150 per rod.

YETI

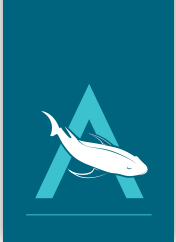
EST. 1969

THOMAS & THOMAS
THE ROD YOU WILL EVENTUALLY OWN

CORTLAND
LINE COMPANY | SINCE 1915

SHILTON
REELS

FLYZ INC.
Testing the Water through Innovation



A'MANI TECHNICAL SPECIFICATIONS	
ENGINES	2 x 110HP Yanmar (Diesel)
WATER MAKER	2 x Osmosea – 150 litres per hour
GENERATORS	2 x 16KVA Vetus Marine
LIFE RAFTS	2 x 6 Pax Duarry Solas
NAVIGATION	1 x Garmin GPSMAP 1020XS, 1 x Garmin Radar GMR 24XHD
RANGE	80NM per 100 litres app 1500NM, Holding capacity 2,200 litres
ACCOMMODATION CONFIGURATION	
CABIN 1	1 x King Size Bed, 1 x Single Bunk Bed, 1 x Bason (Not En-Suite) (Forward Port Side)
CABIN 2	1 x King Size Bed, 1 x Bason (Not En-Suite) (Aft Port Side)
CABIN 3	1 x King Size Bed, 1 x Single Bunk Bed, 1 x Bason (Not En-Suite) (Forward Starboard Side)
CABIN 4	1 x King Size Bed, 1 x Bason (Not En-Suite)(Aft Starboard Side)
PASSAGE BUNK	2 x Single Bunk Beds (Between Cabin 1 & 2)
PASSAGE BUNK	2 x Single Bunk Beds (Between Cabin 3 & 4)
BATHROOMS	2 x Bathroom/Toilet/Showers (Between Cabin 1 & 2 as well as 3 & 4)

ABOARD *MV A'mani*

A'mani, a 54ft motor catamaran is stable, spacious and has a two meter draft that allows her to anchor in calm lea waters. She cruises at an average speed of eight knots, making her the perfect platform to fish from when moving between atolls. A'mani offers two guest cabins with both double and single beds in them, two cabins with double beds and two bunk beds in the passage between cabins. There are two communal shower and toilets as well as an additional on-deck shower. All cabins and indoor areas are fully air conditioned, allowing guests a chance to relax after a long days fishing.

The fore-deck is spacious and boasts two trampolines as well as numerous sun loungers for relaxing while enjoying a sundowner in magnificent view of the surroundings. She has a spacious elevated roof area, which is the perfect place for dinner on a calm evening or a viewpoint to sunbath while watching the fishing action. The stern of the vessel has a covered outside dining area with a set of sugar scoops

leading down to the waters edge. This feature allows for a safe and comfortable transfer from the tender to the main vessel.

A'mani is a sportfisher with a fully rigged game fishing aft deck, which includes outriggers and a fighting chair. She is kitted with kayaks and snorkelling equipment for those interested in a little adventure. The crew consists of a Captain, two crew and two Alphonse Fishing Co. Guides, who cater for your every need. The chef prepares a mix of Creole and international cuisine which incorporates fresh fish daily.

We accommodate up to four fishermen per trip in single cabins or six in a combination of single cabins and bunks. There are two bathrooms which are shared between all parties on board. A'mani is only available on an exclusive charter basis and caters comfortably to groups of between four to six guests. She is fully rigged to cater for fly fishing, game fishing and spin fishing groups.





SEYCHELLES SPECIES

The Finest Saltwater Fly Fishing on the Planet

FLATS FLY FISHING



INDO-PACIFIC PERMIT *Trachinotus blochii*

Also known as Permit, it is a member of the Carangid family and a relative of the Atlantic permit. Poivre has the healthiest populations of permit in the Indian Ocean and tends to have these fish spread out over the entire fishery. The Alphonse Fishing Guides have near-perfected the art of catching these fish, considered the Holy Grail of saltwater flyfishing!



BONEFISH *Albula vulpes*

Poivre has a small population of bonefish that frequent the flats in the 4 to 6lbs range with the odd fish reaching 8lbs. On falling tides bonefish can be found in small schools on the outer edge of the flat.



YELLOWMARGIN TRIGGERFISH *Pseudobalistes flavimarginatus*

Triggerfish are opportunists, feeding mainly on small crustaceans, which makes them perfect targets on a fly. Poivre has a small population of yellowmargin triggerfish that can be targeted at times on the outer reef on a low tide. These colourful characters that grow in excess of 10lbs, have extended anal and dorsal fins that work in conjunction with each other but in different directions, giving them incredible acceleration. Triggers are generally more active on spring tides when the tide is at its lowest and just starting to push.



MOUSTACHE TRIGGERFISH *Balistoides viridescens*

A colourful and energetic feeder that tails when feeding in the shallows, both up on the flats and on the reef edges. Known as a giant, titan or moustache triggerfish, it is the largest of the two species that can be caught at Poivre. There is a small population of moustache triggerfish that can be targeted at times on the outer reef on a low tide. Triggers are generally more prevalent on spring tides when the tide is at its lowest and just starting to push.



GIANT TREVALLY *Caranx ignobilis*

Poivre has less GT's than that of Alphonse, Astove and Cosmoledo as they tend to spend the majority of their time offshore. This atoll however does have some larger specimens, which. Average catch stats of approximately 1 per angler per week when fishing for permit and possibly more if strategically targeted on spring tides.





SEYCHELLES SPECIES

BLUE WATER FLY FISHING & GAME FISHING



INDO-PACIFIC SAILFISH *Istiophorus platypterus*

The sailfish is the fastest fish in the sea and named after its large dorsal fin, which extends most of the length of its body. These acrobatic fighters are found in the water surrounding Poivre within minutes from the island. Poivre and the surrounding atolls have a large population of sailfish and A'mani is very well equipped with the correct tackle, gear and team to tease and target these fish.



WAHOO *Acanthocybium solandri*

The Seychelles waters are known for their incredible numbers of wahoo due to the rich currents that flow close to the atolls. Reaching speeds of up to 80 kilometres per hour, the wahoo is the third fastest fish in the sea. The wahoo that frequent the Poivre and the surrounding atolls range between 10 to 50lbs. At certain times of the year they migrate to follow shoals of baitfish, so some times of the year can be better than others.



DOGTOOTH TUNA *Gymnosarda unicolor*

Dogtooth tuna are a resident-pelagic fish that are found along the drop-offs in good numbers at Poivre and surrounding atolls. They patrol continental shelf drop-offs and frequent depths between 50 and 150ft, which are found relatively close to shore around the atoll. These fish can be targeted by dredging with a heavy sink tip fly line and a mega clouser.



YELLOWFIN TUNA *Thunnus albacares*

Poivre and the surrounding atolls have sheer drop-offs and ledges in close proximity to the islands. Yellowfin tuna tend to follow the bait as they migrate through the Seychelles. Poivre usually has good numbers of yellowfin tuna year round. A'mani is very well equipped with the correct tackle, gear and team to tease and target these hard fighters.





THE FINER DETAILS

Things to Take Note of...

INCLUSIONS & EXCLUSIONS

RATES INCLUDE

- 3 meals daily
- Charter flight Mahé / Alphonse / Mahé
- Fully guided fishing
- Max Pax: 6 anglers
- Tender boat and fuel
- Fly rod and reel loans
- Water, tea and coffee
- 2 soft drinks per person per day

RATES EXCLUDE

- International Flights
- Landing Fees
- Accommodation and transfers on Mahé
- Conservation Donation of US\$25 per day (anglers) and US\$10 (leisure guests)
- Beverages
- Satellite telephone calls
- Travel and medical insurance
- Tackle, flies and lures
- Gratuities
- Additional boats

GENERAL INFORMATION

WEATHER

Seychelles is typically hot and somewhat humid with midday temperatures hovering at $\pm 35^{\circ}$ Celsius ($\pm 90^{\circ}$ Fahrenheit). Evenings are also invariably warm with the exception of the first and last few weeks of the season, when there may be a strong, cooling breeze.

THE FISHING SEASON

The main fishing season runs from early October to the end of May.

HOURS OF DAYLIGHT

Due to its proximity to the equator, there is no real twilight in the Seychelles. The sun rises quickly at around 06h15, and sets with equal swiftness at about 18h30. This varies by only minutes throughout the year, giving nearly a full 12 hours of daylight for 365 days a year.

CONSERVATION DONATION

There is a conservation donation of US\$25 per person per night for anglers and US\$10 for leisure guests. These funds are donated to the Alphonse Foundation for the preservation of nature in the Seychelles.

FROM SCENE OF ACCIDENT MEDIVAC INSURANCE

You are required to obtain "From Scene of Accident Medivac Insurance". Please supply these

details prior to arrival. Alphonse Island and agents cannot assume any financial responsibility for consequences incurred if this has not been obtained.

TRAVEL INSURANCE

You are required to obtain travel insurance that will cover any costs incurred due to flight or trip delays for any reason.

INDEMNITY FORM

You are required to sign an indemnity form once on location.

INOCULATIONS & HEALTH

No inoculations are legally required for entry. However, you may want to check with your local immunization and inoculation clinic for their recommendations on health precautions for travel to the Seychelles. Some travellers elect to protect themselves against hepatitis A with an immunoglobulin injection (short-term protection) or the longer lasting vaccine. Other inoculations may be required if you are planning a trip extension to parts of Africa.

WATER CONSUMPTION

There is a reverse osmosis water maker on A'mani, and water from the faucets is safe to drink. We do not stock mineral water on board and will only supply it if you specifically requested prior to your arrival.

FLIGHTS

You will need to arrive in Mahé the day before your trip as any delay on the day of departure will certainly cause the trip to be missed. It's as important for return flights to be booked the next day after arriving back in Mahé as any delays may cause you to miss your international flights. The group meets an hour before the scheduled departure time at the IDC hangar terminal. After the one hour flight to Alphonse Island, you will be met by the Alphonse Fishing Co. crew and transferred to A'mani. On the last evening A'mani will sail back to Alphonse where you will overnight in the lagoon. The IDC charter flight will collect your group for your one hour flight back to Mahé. Flights are scheduled for Saturdays and Wednesdays allowing for seven, ten and fourteen night stays.

Alternatively private charters can be arranged to suite any dates required. It is also possible to fly into Poivre. Please contact us for more information.

LUGGAGE RESTRICTIONS

Your check in luggage is strictly limited to 15kg (33 pounds) per person, and 5kg (12 pounds) carry-on luggage. If it is not possible to load extra luggage, it will have to be repacked and left on Mahé until your return. Please adhere to the limits. It is suggested that lighter soft-shell luggage is

used. Pack a separate bag with excess equipment to avoid having to repack on the airport. Excess luggage can be left with an Alphonse representative at the hangar.

FISHING CLOTHING

Lightweight long sleeve shirts and long pants that can be zipped off are recommended. Sunscreen with a minimum protection factor of at least 30 is required for any exposed skin areas. A buff is of great importance for sun protection of your face. Sun gloves will help protect your hands. See checklist at the end of this document.

COMMUNICATION ON A'MANI

There is a satellite phone on A'mani for emergencies. If you need to use the phone you may do so and will be charged US\$12 per minute.

ELECTRICITY SUPPLY

The vessel has 24-hour electrical current (240 volt, 50 cycles AC) with British plug points. A European electrical current adapter (3-point, square-pin) is necessary.

CONTACT

We suggest you leave the contact details of Alphonse Island Lodge with your family members in case they need to contact you. The Lodge will then send a message to A'mani for you.

Alphonse Island: +248 422 9700 (GMT+04:00).

When dialing internationally, preceded with appropriate access code.

GRATUITIES

Tipping is never mandatory and if you wish to show appreciation to the staff and require a suggested amount based on an average which guests normally tip then please use the below amounts as an indication. General vessel staff approximately US\$250 per person per week or US\$30 per day as a guideline. For the Fishing Guides a US\$500 per angler per week or US\$85 per day guideline.

Any tips may be left at reception on checkout, which will be handed to the team for distribution. The Guides work on a rotational basis so your tip will be divided equally. Any gratuities will be much appreciated by the staff and we thank you for your generosity.

CURRENCY

You do not need to change your US\$ (US Dollars), € (Euros) or £ (Pounds) into the local currency. We accept US Dollars, Euros and Pounds and all major credit and debit cards. We do not accept American Express.

DUTY FREE ALLOWANCE

200 cigarettes or 50 cigars, 1 litres spirits and 2 litres wine.



WADING

The hard white sand, turtlegrass or coral flats of the Seychelles make for easy wading, separating it from other destinations in the world. As most of the fishing will be done whilst wading, good protective footwear is essential. Standard diver's neoprene booties with a reinforced rubber sole are not appropriate. A more protective flats wading boots must be worn. There are a number of purpose made boots on the market, which are excellent. See suggested brands in tackle and gear check list at the end of this document.

DANGERS TO WATCH OUT FOR WHILST WADING

Stingrays: Some atolls host large numbers of stingrays on the flats. Most species have a venomous, barbed spine near the base of their tails that they can use for defence. These spines can inflict a nasty wound, should an unwary wader inadvertently stand on a stingray. These often sedentary or slow moving fish are easy to see and avoid, and to date no anglers have had any problems with these docile creatures.

Stonefish: Found mainly in the shallows on the coral edges of reef flats, stone-fish are not only lethally toxic but are also very well camouflaged and will not move unless touched. A stonefish has 13 strong hollow spines through which it injects its venom and these will pass through a thin rubber sole with ease. For this reason all wading should be done wearing thick-soled wading boots.

Cone Shells: Fish-eating cones live in crevices among the coral or half covered by sand awaiting their prey which they attack by shooting out a dart that injects a paralysing venom. The venom from certain species can be fatal, however proper footwear will ensure your safety.

Sharks: Frequently encountered whilst wading in Seychelles, sharks are inquisitive and may pause for an instant and give you the once over, but if you remain calm and quietly stand your ground, these magnificent creatures will not bother you.



PAYMENT & BOOKING INFORMATION

CREDIT CARD EXCHANGE

The following credit cards are accepted:

- MasterCard • Visa
- American Express is not accepted.

CURRENCIES ACCEPTED

- Seychelles Rupee • USD • Euro • GBP

CANCELLATIONS

- A 10% fee shall be levied if the reservation is moved to an alternative date within the same season.
- A fee of 10% shall be levied if cancellation is more than 180 days prior to arrival.
- A fee of 50% shall be levied if cancellation is between 180 and 90 days prior to arrival.
- A fee of 100% shall be levied if cancellation is 90 days or less prior to arrival.
- All cancellations and provisional bookings must be confirmed in writing.

PAYMENTS

- Reservations will be held for two weeks.
- A deposit of 50% of the total package charge is required to confirm your booking and the balance is payable in full 3 months prior to arrival.
- All extras will be settled at the hotel on departure.

TARIFFS ARE QUOTED

- Inclusive of VAT in US Dollars
- Subject to availability

TARIFF CHANGES

All tariffs are subject to change, without prior notice, however rates quoted for confirmed bookings will be honoured.

VAT [a Government tax]

A Government Tax [VAT] of 15% is applicable on all items payable.

BANKING DETAILS

Beneficiary	Alphonse Island Lodge LTD
Bank Name	Mauritius Commercial Bank [SEY] LTD
Bank Address	Victoria Branch P O Box 122, Mahé, Seychelles
Account No	00000 254557
SWIFT CODE	MCBLSCSC
IBAN	SC53 MCBL 0607 0000 0000 0025 4557 USD



ALPHONSE
FISHING COMPANY
SEYCHELLES

CONTACT DETAILS

ISLAND

Telephone +248 422 97 00
+248 422 90 30

E-mail info@alphonsefishingco.com

RESERVATIONS

E-mail reservations@alphonsefishingco.com

MARKETING

E-mail marketing@alphonse-island.com

Postal Alphonse Island Lodge
Address P O Box 378, Victoria, Mahé
Republic of Seychelles

Website www.alphonsefishingco.com

Facebook [alphonse.island](https://www.facebook.com/alphonse.island)

Blog www.alphonse-island.com/en/blog

